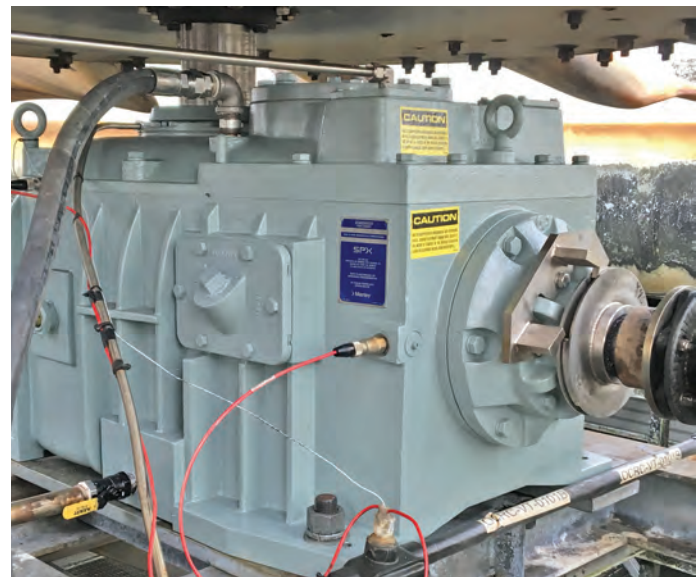


Application	Process Cooling - Combined Cycle Power Plant
Problem	After only a few years of operation, the customer noticed considerable vibration issues and gear damage to the original Amarillo 1712.5 gearboxes. Even after upgrading all 10 cells to the larger Amarillo 1713 gearboxes and using a special lubricant with auxiliary oil coolers and air purge lines, the issues persisted and lifecycle concerns grew.
Solution	To decrease existing vibration issues, the M1713 Marley Geareducer gearbox was selected as a simple, drop-in replacement for the existing Amarillo 1713.
Results	Installation of new Marley Geareducer gearbox was uncomplicated and provided the customer with a cost-effective and reliable solution.



Contact your Marley representative to identify parts for other manufacturers' towers: spxcooling.com/relocator

SPX COOLING TECHNOLOGIES, INC.

7401 WEST 129 STREET
OVERLAND PARK, KS 66213 USA
913 664 7400 | spxcooling@spx.com
spxcooling.com

MS-CS-Buck Station-17 | ISSUED 12/2017

COPYRIGHT © 2017 SPX COOLING TECHNOLOGIES, INC.

All rights reserved.

In the interest of technological progress, all products are subject to design and/or material change without notice.

